

Identify vehicles

PixAlarm offers an Automatic License Plate Recognition (ALPR) feature, able to detect and recognize licences plates event in the worst conditions.

Thanks to InPixal algorithms, it ensures reliable and efficient recognition in real-time, even in bad conditions (wind, luminosity changes, wind, snow, ...)

PixAlarm-ALPR can be connected to any IP, analog or HD-SDI cameras.



Large amount of features

In addition of the core ALPR function, PixAlarm can :

- **Stream thru a browser or in RTSP** all connected cameras,
- **Relay alarms videos** thru emails, FTP, ...
- **Interact with third-parties systems** thru dry-contacts
- **Replay all recorded videos or alarms clips**
- **Auto-detect camera defect**, by analyzing the image quality,
- **Manages white-list/black-list of vehicles**, in order to trigger specific actions or notifications
- And more !

Accessible and adaptative

With its intuitive web interface, all the informations reported by PixAlarm can be **viewed remotely** from your computer or a tablet via a password protected access.

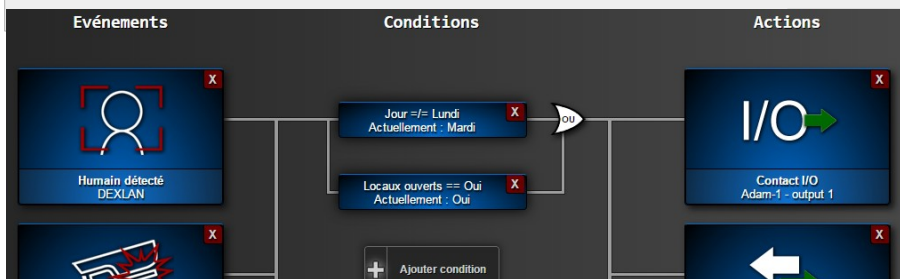
Thanks to its graphical scripting engine, PixAlarm performs various actions according to your use cases and needs.

Integration with VMSs

Pixalarm interfaces with main VMSs from the market : Genetec SecurityCenter, Mirasys, etc.

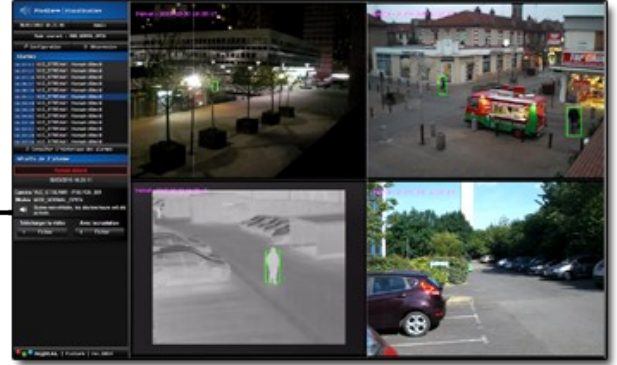
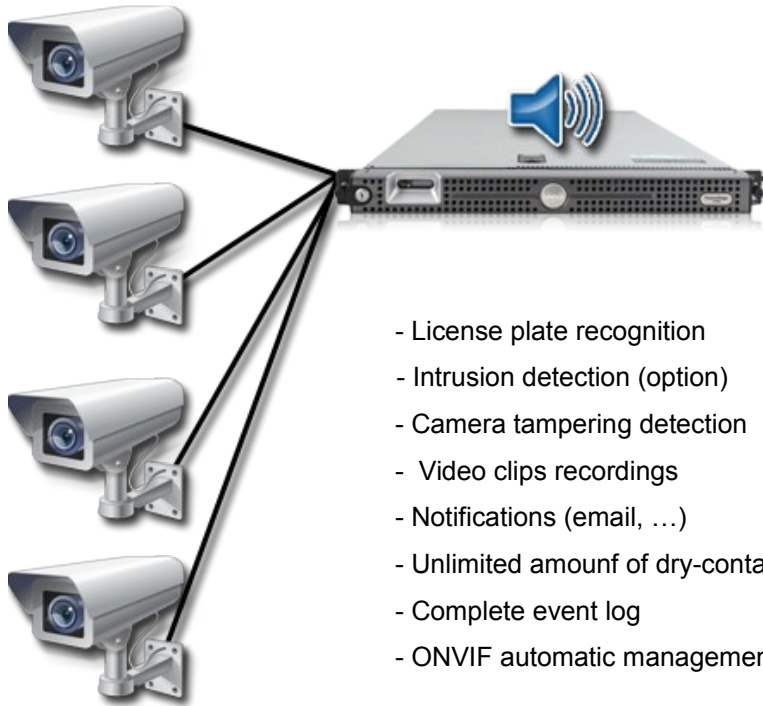


PixAlarm Mono



Advanced planning

PixAlarm allows you to plan all behaviours of the application : what to do, when and under what conditions.



- License plate recognition
 - Intrusion detection (option)
 - Camera tampering detection
 - Video clips recordings
 - Notifications (email, ...)
 - Unlimited amount of dry-contact
 - Complete event log
 - ONVIF automatic management
- Live viewing
 - Geo-localization option
 - Network monitoring
 - Remontée des alarmes en direct
 - 24/24 recording

Serveur	PixAlarm Mono : 1 camera (rugged/fanless PC, 15W, VDC 9-48V on screw terminal block) PixAlarm 4 : 4 cameras (rugged/fanless PC, VDC 9-48V on screw terminal block) PixAlarm 4+ : de 4 à 7 cameras (2U rack) PixAlarm 8+ : de 8 à 15 cameras (2U rack) PixAlarm 16+ : de 16 à 31 cameras (2U rack)
	Inputs : IP, PAL, NTSC, HD-SDI
	1 year of free support and 3 years guarantee included
Dimensions	PixAlarm Mono : 131 x 185 x 54 mm PixAlarm 4 : 227 x 261 x 106 mm PixAlarm 4+ à 16+ : 450 x 440 x 89 mm
System Features	On-board dry-contacts (PIXALARM-MONO and PIXALARM-4)
	Unlimited dry-contacts modules (Korenix or Advantech ADAM modules)
	2 x Ethernet Gbs interfaces on all products
	RS-232 / RS-422 / RS-485 options available
	Embedded Linux OS from INPIXAL
	Cyber-security : enhanced SW security against external attacks (firewall, audits, ...)

All in one server

PixAlarm is shipped as a rack server (2U) or as a rugged server, depending on your application. Ready for use, no installation on client computers is required. A web browser is enough !

Powerful and intuitive

Configure PixAlarm to fit your needs and let its algorithms do the job !
Do you need a higher sensitivity or mask an area of the scene ? PixAlarm can be configured in few minutes through an intuitive user interface.

Interoperability

Thanks to ONVIF support, PixAlarm can access all IP cameras regardless of their model. Keep the freedom to choose the devices you want to use !

Video management

Videos are stored inside PixAlarm and can be downloaded on demand with or without overlays. The alarm log gives you access to all events details (video, map snapshot, date, ...).