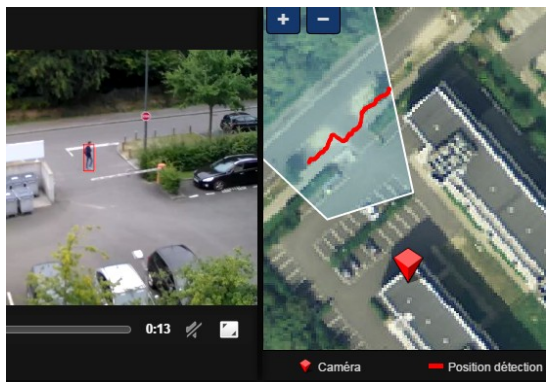
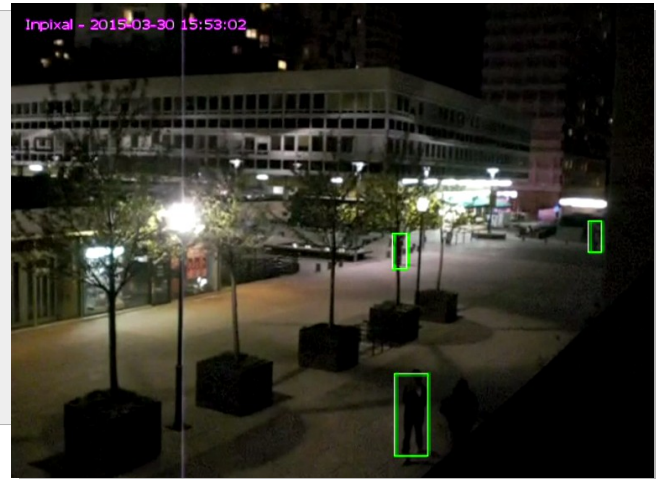


Secure your sites

PixAlarm is an **all-in-one intrusion detection server**, with **video streaming and recording capabilities**.

Based on InPixal algorithms, PixAlarm performs efficient detections over video streams in real-time, with no false alarms, whatever the conditions are.

Thanks to an intuitive user interface, PixAlarm allows users to get the best from your existing cameras : IP, analog, SDI, visible light or thermal.



Many functions, one product

PixAlarm includes the following features :

- **Detect and track humans and vehicles intrusion**
- **Stream all connected cameras** to your web browser
- **Notify external services** (FTP emails, VMSs, ...) on alarms
- **Interact with other equipments through dry-contacts**: light, sirens, etc.
- **Replay alarm videos**, associated with a geolocation
- **Auto-detect cameras defaults**, like low light, tampering and blur.
- **Permanent recording of incoming videos**

Accessible and adaptative

With its intuitive web interface, all the informations reported by PixAlarm can be **viewed remotely** from your computer or a tablet via a password protected access.

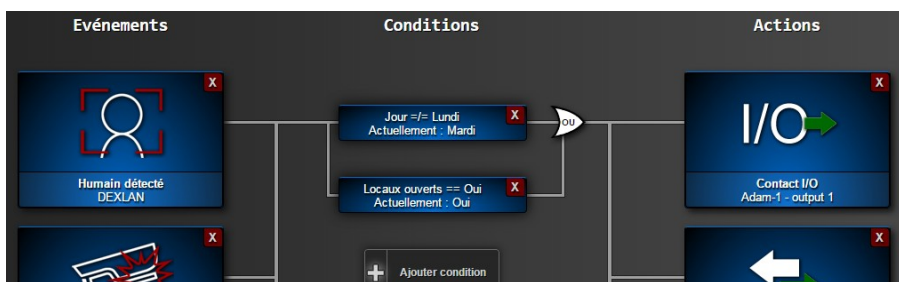
Thanks to its graphical scripting engine, PixAlarm performs various actions according to your use cases and needs.

Integration with VMSs

Pixalarm interfaces with main VMSs from the market : Genetec SecurityCenter, Mirasys, etc.

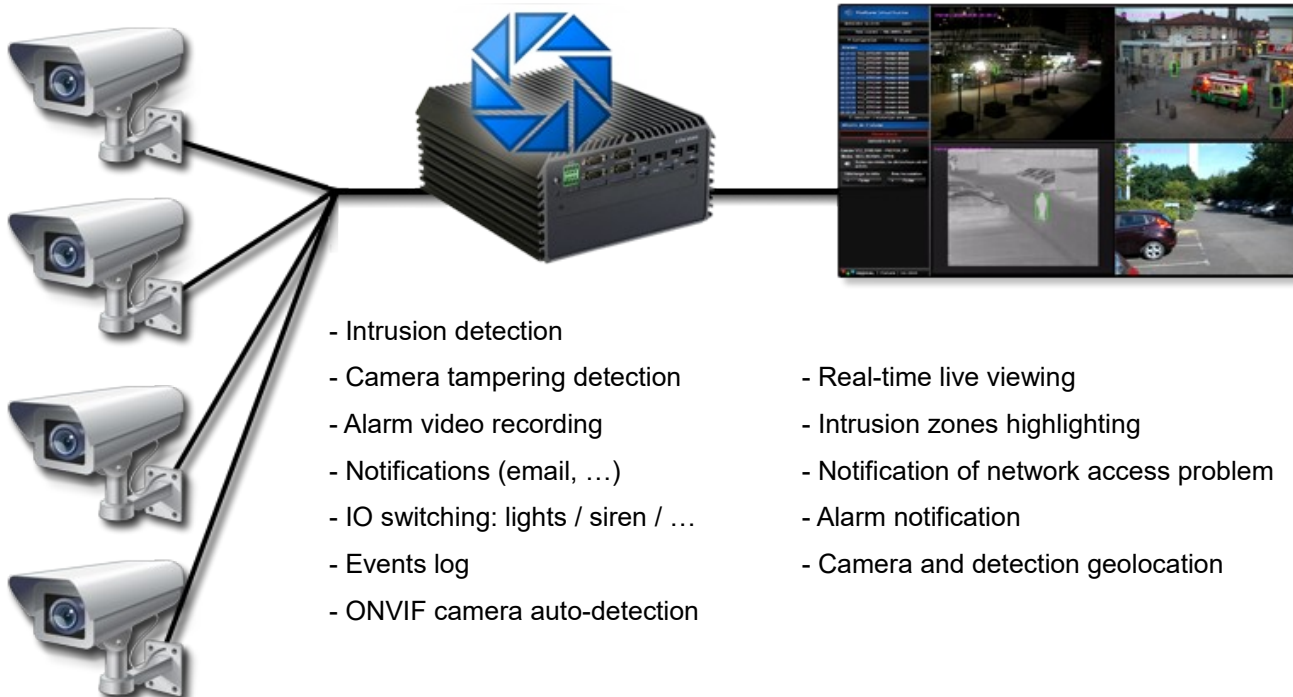


PixAlarm Mono



Advanced planning

PixAlarm allows you to plan all behaviours of the application : what to do, when and under what conditions.



- Intrusion detection
- Camera tampering detection
- Alarm video recording
- Notifications (email, ...)
- IO switching: lights / siren / ...
- Events log
- ONVIF camera auto-detection
- Real-time live viewing
- Intrusion zones highlighting
- Notification of network access problem
- Alarm notification
- Camera and detection geolocation

Server	PixAlarm Mono : 1 camera (rugged fanless server, 15W, VDC 9-48V alim on screw terminal block) PixAlarm 4 : 4 cameras (rugged fanless server, VDC 9-48V alim on screw terminal block) PixAlarm 4+ : from 4 to 7 cameras (2U rack) PixAlarm 8+ : from 8 to 15 cameras (2U rack) PixAlarm 16+ : from 16 to 31 cameras (2U rack)
	Input : camera IP, PAL or HD-SDI
	1 year of free support and 3 years guarantee included
Dimensions	PixAlarm Mono : 131 x 185 x 54 mm PixAlarm 4 : 227 x 261 x 106 mm PixAlarm 4+ to 16+ : 450 x 440 x 89 mm
System features	On-board dry-contacts (PIXALARM-MONO and PIXALARM-4)
	Unlimited dry-contacts modules (Korenix or Advantech ADAM modules)
	2 x Ethernet Gbs interfaces on all products
	RS-232 / RS-422 / RS-485 options available
	Embedded Linux OS from INPIXAL
	Cyber-security : enhanced SW security against external attacks (firewall, audits, ...)

All in one server

PixAlarm is shipped as a rack server (2U) or as a rugged server, depending on your application. Ready for use, no installation on client computers is required. A web browser is enough !

Powerful and intuitive

Configure PixAlarm to fit your needs and let its algorithms do the job !
Do you need a higher sensitivity or mask an area of the scene ? PixAlarm can be configured in few minutes through an intuitive user interface.

Interoperability

Thanks to ONVIF support, PixAlarm can access all IP cameras regardless of their model. Keep the freedom to choose the devices you want to use !

Video management

Videos are stored inside PixAlarm and can be downloaded on demand with or without overlays. The alarm log gives you access to all events details (video, map snapshot, date, ...).