



### Transcend your videos

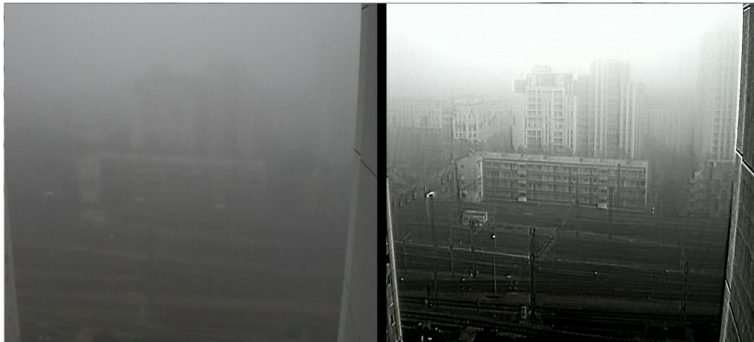
PixAlarm-Pixen performs **advanced video stabilization and enhancements**, for all the streams coming from your installed cameras.

Thanks to InPixal algorithms, it ensures **reliable and efficient** processing in real-time, **even in bad conditions** (wind, luminosity changes, wind, snow, ...)

PixAlarm-Pixen can be connected to **any IP, analog or HD-SDI cameras**.



### Key features



- High-end stabilization, with advanced settings
- Heat processing
- Smog processing
- Snow/rain processing
- Noise reduction
- Edge enhancement
- Contrast enhancement
- Actions pllaing
- 24/24 recordingr

### Accessible and adaptative

With its intuitive web interface, all the informations reported by PixAlarm can be **viewed remotely** from your computer or a tablet via a password protected access.

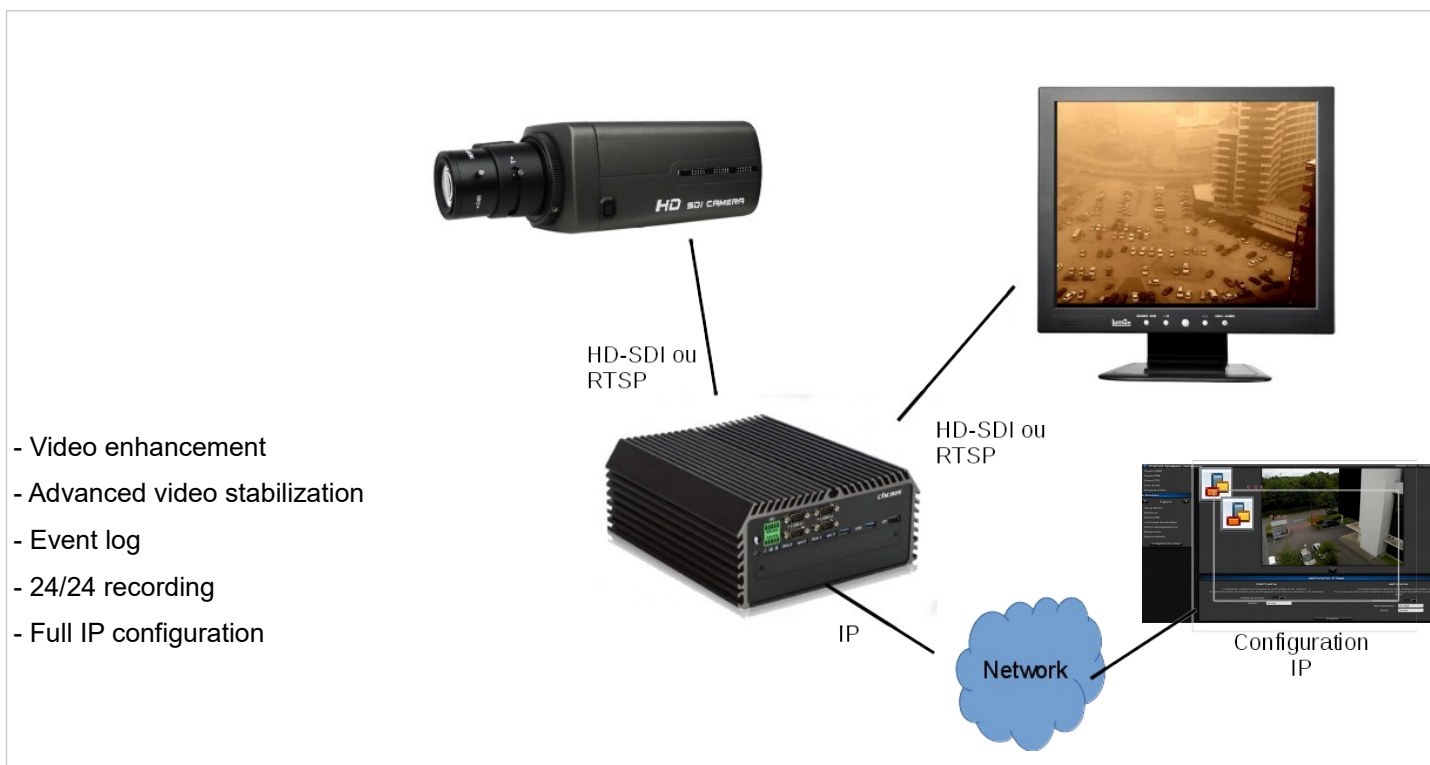
Thanks to its graphical scripting engine, PixAlarm performs various actions according to your use cases and needs.



PixAlarm - Pixen



### User friendly interface



<b>Server</b>	PixAlarm : rugged/fanless server, VDC 9-48V, -20°C/+70°C
	Inputs : RTSP/RTP or 1 x HD SDI or 2 x HD-SDI, max resolution: 1920x1080 30fps
	Outputs: RTP/RTSP or 1 x HD-SDI or 2 x HD-SDI
	1 year of free support and 3 years guarantee included
<b>Dimensions</b>	227 x 261 x 76 mm or 227 x 261 x 106 mm for SDI versions
<b>System features</b>	On-board dry-contacts
	Unlimited dry-contacts modules (Korenix or Advantech ADAM modules)
	2 x Ethernet Gbs interfaces on all products
	RS-232 / RS-422 / RS-485 options available
	Embedded Linux OS from INPIXAL
	Cyber-security : enhanced SW security against external attacks (firewall, audits, ...)

### All in one server

PixAlarm is shipped as a rack server (2U) or as a rugged server, depending on your application. Ready for use, no installation on client computers is required. A web browser is enough !

### Powerful and intuitive

Configure PixAlarm to fit your needs and let its algorithms do the job !  
Do you need a higher sensitivity or mask an area of the scene ? PixAlarm can be configured in few minutes through an intuitive user interface.

### Interoperability

Thanks to ONVIF support, PixAlarm can access all IP cameras regardless of their model. Keep the freedom to choose the devices you want to use !

### Video management

Videos are stored inside PixAlarm and can be downloaded on demand with or without overlays. The alarm log gives you access to all events details (video, map snapshot, date, ...).